

Vermeer®

Stump Cutter

SC252



Vermeer®

SC 252

Equipped with industry-leading safety features

Since Vermeer introduced the stump cutter in 1957, we have carved a reputation in the industry for intelligent design features, uncompromising strength, and relentless power. With this same mindset, Vermeer designed the SC252.

Safety is an important factor in the tree-care and rental industries. The SC252 design is equipped with exclusive safety features, such as the patented cutter wheel guard and operator presence system with electronic sensors integrated into the primary control handles.

Equipped with a 27 hp (20.1 kW) Kohler Command engine on a narrow 35" (88.9 cm) footprint, the Vermeer SC252 brings power to backyard stumps. With optional AutoSweep® technology, exclusive to Vermeer, cutter wheel sweep speed automatically adjusts during operation, helping to reduce engine and drivetrain stress.

The Vermeer SC252 also features the Yellow Jacket™ Cutter System, engineered to provide faster, easier serviceability, as well as extend pocket and tooth life.



A narrow width of 35" (88.9 cm) allows entry through most standard gates. Additionally the SC252 is able to maneuver in tight work areas by disengaging one of the drive wheel locks.



Operator presence and cutter wheel brake. Control handles for travel, swing, and raise / lower are equipped with electronic sensors that recognize the operator's touch. If the operator's hands leave the controls for .5 second, the clutch will disengage and the cutter wheel brake will engage. If the operator's touch is resumed within 2 seconds, the clutch will automatically reengage and cutting may continue. This user-friendly system is easy to operate and designed to minimize the potential for unwanted cutter wheel stops.



The SC252 optional hydraulic front steer features an oscillating axle for mobility, specially designed steering for tighter turns, an easily accessible single-lever control, and hardened steel pivot pins and bushings.

Stump Cutter



The patent-pending Yellow Jacket Cutter System features a universal tooth that can accommodate all cutting positions on the cutter wheel. Plus, each tooth is designed with two cutting edges. With the second edge protected from primary wear while the first edge is engaged, when the tooth becomes indexed to the second position, the opposite edge provides a like-new cutting surface for extended tooth life.



Optional rear dual tires improve floatation, traction and stability, enabling the operator to work more effectively on uneven terrain.

SC252 Specifications

General

Weight: 1040 lb (471.4 kg)
Length (with cutter guard): 115" (292 cm)
Width (with STD drive wheels): 35" (88.9 cm)
Height: 53" (134.6 cm)

Engine

Make and model: Kohler Command
Gross horsepower: 27 hp (20.1 kW) @ 3600 rpm
Electrical system: 12 volt
Fuel-tank capacity: 6 gal (22.7 L)

Hydraulic System

Oil-tank capacity: 2.8 gal (10.6 L)
System relief: 1500 psi (103.4 bar)
Oil type: Vermeer VMF

Cutter Wheel Drive Train

Wheel diameter without teeth: 16" (40.6 cm)
Wheel thickness: .5" (1.3 cm)
Drive: 2-stage, Vee-belt
Tooth style: Yellow Jacket Cutter System
Number of teeth: 16

Cutting Dimensions

Above ground level: 25" (63.5 cm)
Below ground level: 13" (33 cm)
Straight line: 39" (99.1 cm) straight

Options

AutoSweep
Hydraulic front steer
Rear dual tires
Towing package
Biodegradable hydraulic oil
Special paint
Extended warranties

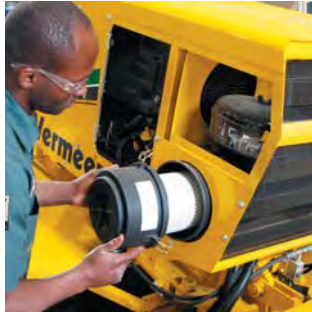


The 3-year / 3000-hour extended limited warranty on gearboxes and driveline offers you peace of mind, in addition to the 1-year / 1000-hour Vermeer equipment limited warranty.

The Vermeer dealer network: Reliable support, all over the world.



With nearly 200 locations across the globe - you're never far from an independent, authorized Vermeer dealer. Our dealers are in place to support your success with product expertise that's second to none.



When you need service, you can count on your local Vermeer dealer. With multiple locations, remote service trucks, and factory-offered technician training, your local Vermeer dealer offers reliable service that keeps your equipment running.



Vermeer parts are designed and manufactured to original specifications, so whether they're new parts or replacement parts, they'll live up to the Vermeer name.



Vermeer EMEA
(Europe, Middle East, Africa and CIS)
P.O. Box 323
4460 AS Goes
the Netherlands
Phone: +31 113 272700
Fax: +31 113 272727

Vermeer Corporation
1210 Vermeer Road East
P.O. Box 200
Pella, Iowa 50219 U.S.A.
Phone: (641) 628-3141
Fax: (641) 621-7773
International fax: +1 (641) 621-7730
www.vermeer.com

Vermeer Asia Pacific
48 Toh Guan Road East
#01-105 Enterprise Hub
Singapore 608586
Phone: +65 6516 9560
Fax: +65 6515 9218

Call toll-free 1-888-VERMEER
1-888-837-6337 (USA only)

Building Industry Alliances to Serve You Better.

Vermeer has forged strong strategic alliances with tree-industry giants that include Sherrill Incorporated and ArborMaster Training. These alliances ensure that top-quality industry support is the standard at Vermeer dealerships. Membership with the NAA and ISA helps Vermeer stay in touch with the customers it serves and the issues they face.



Equipment shown is for illustrative purposes only and may display optional accessories or components. Please contact your local Vermeer dealer for more information about machine specifications. Vermeer Corporation reserves the right to make changes in engineering, design and specifications; add improvements; or discontinue manufacturing at any time without notice or obligation.

Vermeer, Vermeer logo, Yellow Jacket, and AutoSweep are trademarks of Vermeer Manufacturing Company in the U.S. and / or other countries.

Kohler is a registered trademark of Kohler Company. Sherrill is a trademark of Sherrill Incorporated.

© 2009 Vermeer Corporation. All Rights Reserved.